

FABULA

LIVING



RUNNER COLLECTION

Design Tradition Craftsmanship



REFRESH
RENEW
REUSE



A Stylish Breeze

A runner is like a breeze of fresh air in the room. Reminding us how the simple things often have power to lift the mood, a runner can sweep through the rooms with tranquillity and serenity, or it can be a bright and bursting pop of colour. What better way to elevate the style and ambience in a space than with this flexible, affordable, and game changing interior object.

Our growing collection of runners offers endless options to decorate with timeless stripes in an array of dusty rose, red and orange, deep, moody charcoal, shades of blues and greens, grey, earthy tones, and soft shades of beachy colours.

Embracing nature's imperfect beauty all our colours are saturated and muted, making the different styles complement one another perfectly. The runners are all in the same high-quality as the rest of our collection and can be used and re-used in the kitchen, hallway, children's room, bedroom, office, beach house and any spot that needs a modern update, an aesthetic lift, a new mood and that something extra.



Hand-woven in
New Zealand wool on
cotton warp, reversible
80x240 cm
Item no. 74010133

SVANEKE

Design / Lisbet Friis



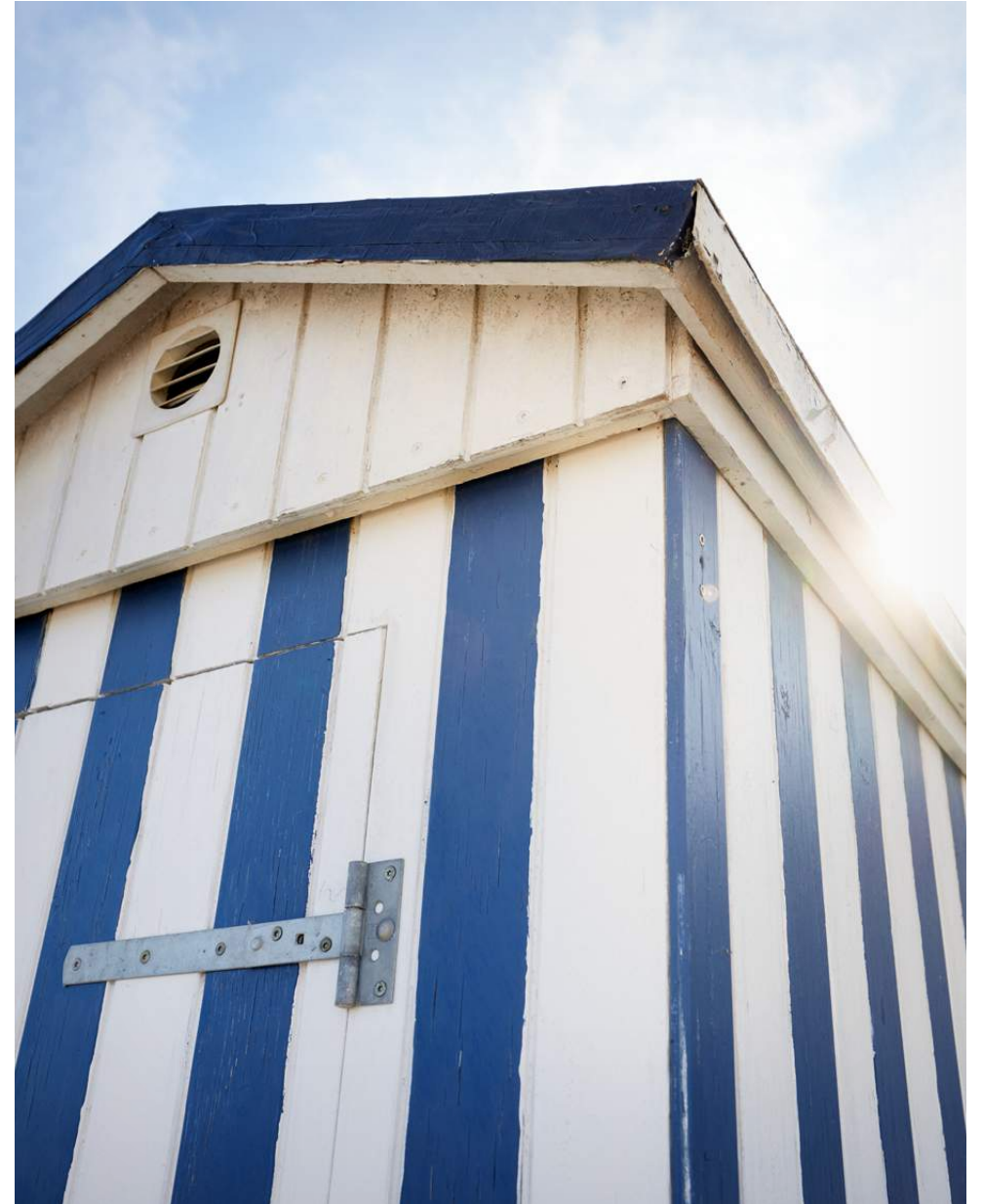
LISELEJE

Design / Lisbet Friis

Our homes are reflections on how we feel and a smaller rug like a runner is a beautiful way to shift the energy and refresh the style in a room.



Hand-woven in
New Zealand wool
on cotton warp, reversible
80x240 cm
Item no. 74030333



TISVILDE

Design / Lisbet Friis



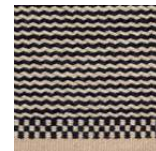
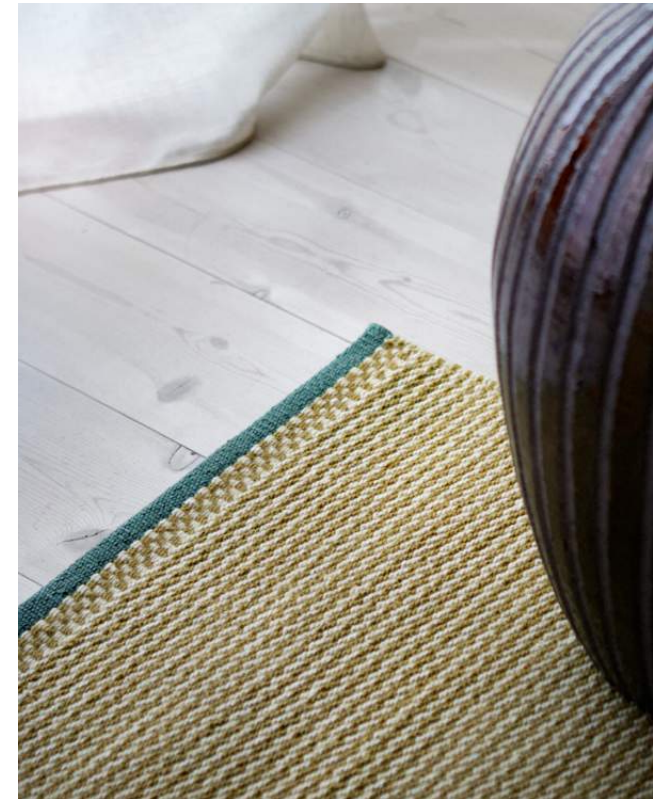
Hand-woven in
New Zealand wool
on cotton warp, reversible
80x240 cm
Item no. 74040433



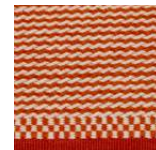


DAISY

Design / Lisbet Friis



1512 BLACK/BEIGE



2011 SIENNA/OFF WHITE



2311 HAY/OFF WHITE



4711 OLIVE/OFF WHITE

Hand-woven in
New Zealand wool
on linen warp
80x240 cm

Colours / Item no.
1512 black/beige / 37151233
2011 sienna/off white / 37201133
2311 hay/off white / 37231133
4711 olive/off white / 37471133

GUDHJEM

Design / Lisbet Friis



Crisp stripes and harmonious blue shades. A runner allows for bolder stylish choices as you can play around with and re-use the designs in any room.



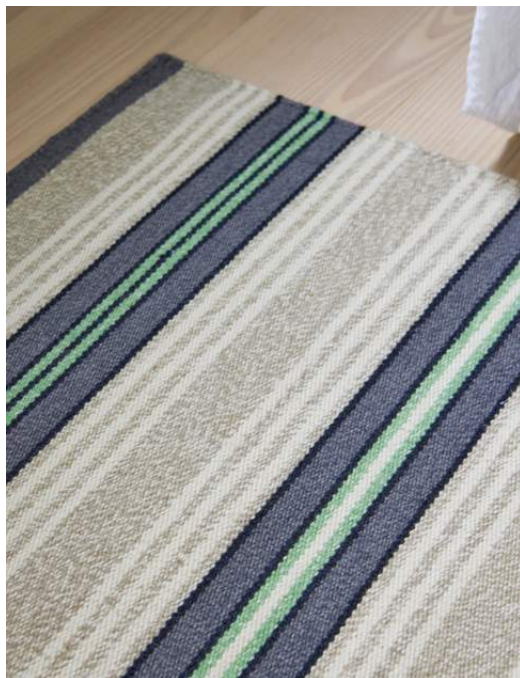
Hand-woven in
New Zealand wool on
cotton warp, reversible
80x240 cm
Item no. 74020233





BLOKHUS

Design / Lisbet Friis



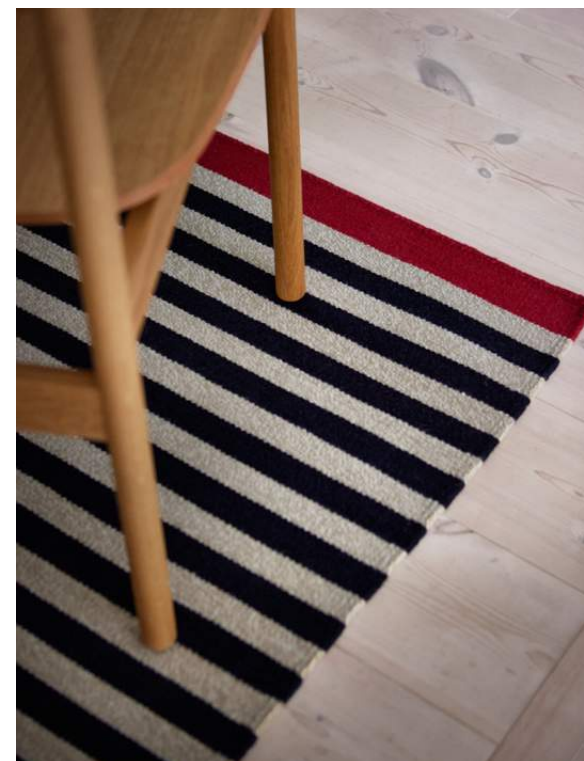
A runner is a gamechanger in interior decoration - flexible, versatile, and an easy update to a small space, or a living room.

Hand-woven in
New Zealand
wool on cotton
warp, reversible
80x240 cm
Item no.74070733



ROSEMARY

Design / Lisbet Friis



Hand-woven in
New Zealand wool
on cotton warp, reversible
90x250 cm

Colours / Item no.
1512 black/beige / 01151229
1627 grey/light grey / 01162729



1512 BLACK/BEIGE



1627 GREY/LIGHT GREY

VERONICA

Design / Lisbet Friis



Hand-woven in
Gabbeh-dyed
New Zealand wool
on cotton warp
80x240 cm

Colours / Item no.
1616 grey / 30161633
1717 blue / 30171733
1818 green / 30181833



1616 GREY



1717 BLUE



1818 GREEN





SKAGEN

Design / Lisbet Friis



Hand-woven in
New Zealand wool
on cotton warp, reversible
80x240 cm
Item no. 74060633

GILLELEJE

Design / Lisbet Friis



Our runners balance high-quality, soothing shades with darker accent tones and sharp design as effortlessly as the colours and shapes blend along the beach.



Hand-woven in
New Zealand wool
on cotton warp, reversible
80x240 cm
Item no. 74050533



HELGA

Design / Jens Landberg Schröder



Hand-woven in
New Zealand wool on
cotton warp, reversible
80x240 cm
Item no. 92141233





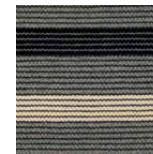
FLEUR

Design / Lisbet Friis

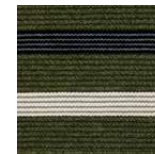


Hand-woven in
New Zealand wool
on cotton warp,
reversible
80x240 cm

Colours / Item no.
1615 ash/black / 36161533
1815 moss/black / 36181533
2021 sienna/purple / 36202133
2312 gold/latte / 36231233



1615 ASH/BLACK



1815 MOSS/BLACK



2021 SIENNA/PURPLE



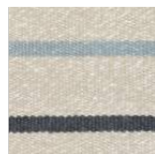
2312 GOLD/LATTE

POPPY

Design / Lisbet Friis



2312 YELLOW/BEIGE



3812 LIGHT BLUE/BEIGE

Hand-woven in
New Zealand wool
and linen on
cotton warp, reversible
80x240 cm

Colours / Item no.
2312 yellow/beige / 04231233
3812 light blue/beige / 04381233



THANKS

to all of you

Spliid
Pernille Folcarelli
Foto Factory
Christian Bruun
Skagerak
A Hint of Neon
Josefine Winding
Gubi

CARE INSTRUCTION

We always recommend that you use an underlay to extend the life of your rug. An underlay ensures that the rug remains in a fixed position. It also reduces the risk of any staining. Some of our kilim rugs are reversible. We recommend that you turn your rug over every six months. Do not place your rug in direct sunlight. Daily cleaning and spot cleaning: Please visit fabulaliving.dk

As our rugs are unique and hand-made, the size can vary slightly from the ordered size (+/-4%). Irregularities in size, colour and weaving are characteristics of hand-made rugs.

PHOTOGRAPHER - Bjarni B. Jacobsen
STYLING - Laura Scheuer Trøstrup / thesweetspot.dk
GRAPHIC PRODUCTION - Graphic Unit
ART DIRECTOR - Anders Henriksen

Fabula Living ApS, Gotfred Rodes Vej 18, 2920 Charlottenlund
+45 2233 3966, info@fabulaliving.dk, www.fabulaliving.dk

Fabula Living 2023. © All rights reserved.



Fabula Living creates high quality hand-made contemporary rugs blending a strong Scandinavian style and tradition with the ancient techniques of weaving